



# DSV Seafreight

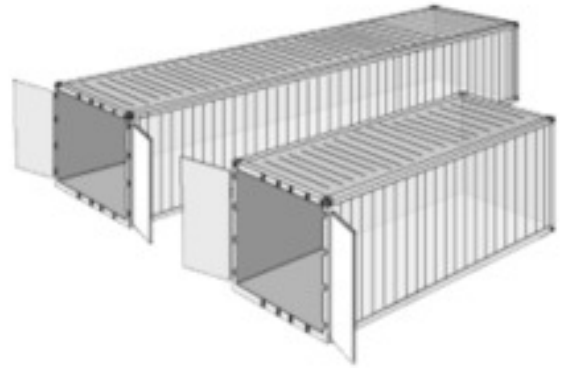
Container Guidelines



Global Transport and Logistics

# Dry Containers

Dry Containers 20' and 40' (general purpose) are manufactured from either aluminum or steel. They are suitable for most types of cargo. Aluminum dry containers have a slightly larger payload than steel, and steel dry containers have a slightly larger internal cube.



## 20' Dry Container

Tare Weight	Payload Capacity	Cubic Capacity	Internal Length
2,180 kg	28,300 kg	33 m <sup>3</sup>	5.9 m
5,030 lb	62,390 lb	1,165 cu ft	19.4 ft

Internal Width	Internal Height	Door Opening Width	Door Opening Height
2.35 m	2.39 m	2.34 m	2.28 m
7.7 ft	7.5 ft	7.7 ft	7.5 ft

## 40' Dry Container

Tare Weight	Payload Capacity	Cubic Capacity	Internal Length
3,640 kg	28,800 kg	67 m <sup>3</sup>	12.03 m
8,024 lb	63,625 lb	2,390 cu ft	39.5 ft

Internal Width	Internal Height	Door Opening Width	Door Opening Height
2.35 m	2.39 m	2.35 m	2.28 m
7.7 ft	7.9 ft	7.7 ft	7.5 ft

# Reefer Containers

Reefer Containers or refrigerated containers are used to transport goods requiring temperature-controlled conditions in transit, such as fruit, vegetables, dairy products and meat. It is fitted with a refrigeration unit which is connected to the carrying ship's electrical power supply.



## 20' Reefer Container

Tare Weight	Payload Capacity	Cubic Capacity	Internal Length
2,710 kg	27,770 kg	28 m <sup>3</sup>	5.45 m
5,980 lb	61,220 lb	998 cu ft	17.9 ft

Internal Width	Internal Height	Door Opening Width	Door Opening Height
2.29 m	2.18 m	2.93 m	2.25 m
7.5 ft	7.2 ft	7.5 ft	7.3 ft

## 40' Reefer Container

Tare Weight	Payload Capacity	Cubic Capacity	Internal Length
4,800 kg	27,700 kg	59.3 m <sup>3</sup>	11.56 m
10,584 lb	61,079 lb	2,093 cu ft	37.9 ft

Internal Width	Internal Height	Door Opening Width	Door Opening Height
2.28 m	2.25 m	2.9 m	2.26 m
7.5 ft	7.4 ft	7.5 ft	7.4 ft

## 45' Reefer Container

Tare Weight	Payload Capacity	Cubic Capacity	Internal Length
4,850 kg	29,150 kg	67 m <sup>3</sup>	11.57 m
10,694 lb	64,276 lb	2,365 cu ft	38 ft

Internal Width	Internal Height	Door Opening Width	Door Opening Height
2.27 m	2.55 m	2.29 m	2.26 m
7.4 ft	8.4 ft	7.5 ft	7.4 ft

# Open Top Containers

Open top containers have an open top covered by a tarpaulin instead of a solid roof. This enables oversized cargo such as timber and scrap metal to be loaded from the top. Open top containers normally have end doors to give flexibility to loading and discharging operations.



## 20' Open Top Container

Tare Weight	Payload Capacity	Cubic Capacity
2,450 kg	30,050 kg	32.5 m <sup>3</sup>
5,402 lb	66,248 lb	1,149 cu ft

Internal (l x w x h)	Door Opening (w x h)	Roof Opening (w x h)
5.9 m x 2.35 m x 2.38 m	2.34 m x 2.28 m	2.23 m x 5.33 m
20 ft x 8 ft x 8.5 ft	7.7 ft x 7.4 ft	7.3 ft x 17.5 ft

## 40' Open Top Container

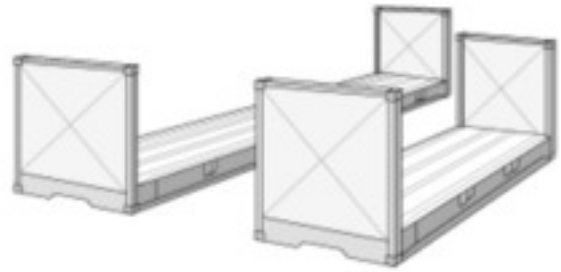
Tare Weight	Payload Capacity	Cubic Capacity
4,050 kg	28,450 kg	66.8 m <sup>3</sup>
8,929 lb	62,721 lb	2,359 cu ft

Internal (l x w x h)	Door Opening (w x h)	Roof Opening (w x h)
12.03 m x 2.35 m x 2.38 m	2.34 m x 2.28 m	2.23 m x 11.55 m
39.5 ft x 7.7 ft x 7.8 ft	7.7 ft x 7.5 ft	7.3 ft x 38 ft



# Flat Rack Containers

Flat rack containers are especially suitable for heavy loads and cargo that needs loading from the top or sides, such as pipes and machinery. You will find collapsible containers and non-collapsible containers with or without walls. Flat rack containers are manufactured from steel and come in 20' and 40' sizes.



## 20' Flat Rack Container

<b>Tare Weight</b> 2,890 kg 6,370 lb	<b>Payload Capacity</b> 31,110 kg 68,580 lb	<b>Internal Length</b> 5.6 m 19.4 ft
<b>Internal Width</b> 2.23 m 7.7 ft	<b>Internal Height</b> 2.23 m 7.7 ft	

## 40' Flat Rock Container

<b>Tare Weight</b> 5,200 kg 11,464 lb	<b>Payload Capacity</b> 47,300 kg 104,278 lb	<b>Internal Length</b> 11.7 m 38.3 ft
<b>Internal Width</b> 2.37 m 7.9 ft	<b>Internal Height</b> 2.26 m 7.4 ft	

# High Cube Containers

High cube dry containers ensure that you gain an extra foot in height compared with dry containers. The high cube containers are ideal for light, voluminous or bulky cargo. These extra volume containers are made in 40' and 45' sizes in steel and aluminum.



## 40' High Cube Dry Container

Tare Weight	Payload Capacity	Cubic Capacity	Internal Length
3,810 kg	28,690 kg	76 m <sup>3</sup>	12.03 m
8,400 lb	63,250 lb	2,700 cu ft	39.5 ft

Internal Width	Internal Height	Door Opening Width	Door Opening Height
2.35 m	2.7 m	2.34 m	2.58 m
7.7 ft	8.9 ft	7.7 ft	8.5 ft

## 45' High Cube Dry Container

Tare Weight	Payload Capacity	Cubic Capacity	Internal Length
4,850 kg	27,650 kg	85 m <sup>3</sup>	13.56 m
10,692 lb	60,957 lb	3,036 cu ft	44.5 ft

Internal Width	Internal Height	Door Opening Width	Door Opening Height
2.35 m	2.7 m	2.34 m	2.58 m
7.7 ft	8.9 ft	7.7 ft	8.5 ft





# Flatbed Containers

Flatbed containers are without sides, ends and roof. They are used for odd-sized cargo which does not fit on or in any other type of container.



\*Specific dimensions and capacity of flatbed containers may vary depending on the container manufacturer, the age of the container and the container owner. The specifications listed below are, however, representative.



## 20' Platform Container

Tare Weight	Payload Capacity	Internal Length	Internal Width
2,740 kg	31,260 kg	6.06 m	2.44 m
6,042 lb	68,928 lb	19.9 ft	8 ft

## 40' Platform Container

Tare Weight	Payload Capacity	Internal Length	Internal Width
5,700 kg	39,300 kg	12.19 m	2.44 m
12,569 lb	86,657 lb	40 ft	8 ft

# Garment on Hanger Containers

Garment on hangers (GOH) containers give customers the option of using a string or bar system, or a combination of both. The GOH containers offer increased flexibility, greater internal load capacity and savings on transportation and handling costs.



\*Specific dimensions and capacity of flatbed containers may vary depending on the container manufacturer, the age of the container and the container owner. The specifications listed below are, however, representative.

## 20' GOH Container

Tare Weight	Payload Capacity	Cubic Capacity	Internal Length
2,300 kg	28,180 kg	33.2 m <sup>3</sup>	5.9 m
5,071.5 lb	62,136.9 lb	1,172 cu ft	19.4 ft

Internal Width	Internal Height	Door Opening Width	Door Opening Height
2.35 m	2.39 m	2.34 m	2.28 m
7.7 ft	7.9 ft	7.7 ft	7.5 ft

## 40' GOH Container

Tare Weight	Payload Capacity	Cubic Capacity	Internal Length
3,750 kg	28,750 kg	67.7 m <sup>3</sup>	12.03 m
8,268.8 lb	63,393.8 lb	2,389.8 cu ft	39.5 ft

Internal Width	Internal Height	Door Opening Width	Door Opening Height
2.35 m	2.39 m	2.34 m	2.28 m
7.7 ft	7.9 ft	7.7 ft	7.5 ft







TERMINAL 1 RICHARDKAI

HHLA

TERMINAL 1





DSV Air & Sea Inc.  
732.850.8000  
[www.us.dsv.com](http://www.us.dsv.com)

Freight Forwarding License Number: 17331NF  
Freight Forwarding Bond Number: 50683  
NVOCC Bond Number: 50682  
NVOCC SCAC Code: DFQD



Global Transport and Logistics